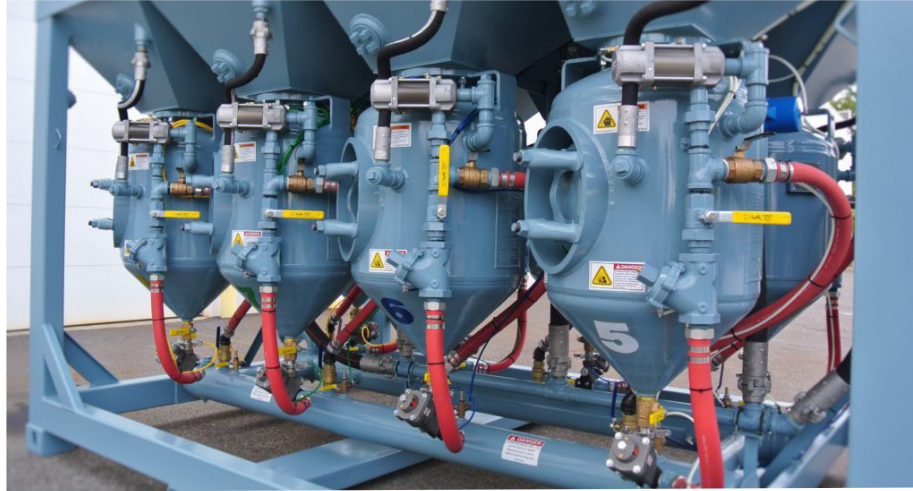


Blast Hoppers



EQUIPMENT FEATURES

- 2, 3, 4, 6, & 8 pot arrangements available
- Remote choke/blowdown control on panel uses 3 wire or exclusive 4 wire deadman switch
- Cone Bottoms standard
- 175 psi pressure rating standard for extra storage capacity
- Compatible with any voltage control power

PRODUCT SPECIFICATIONS

- 6, 8, 10, & 12 ton models
- 32 ton Shipyard Units
- Optional double chambered models
- Trailer or Skid Mounted

This document serves as a general guideline, and the information provided within is not meant for exact specifications or performance. No warranties or promises accompany this brochure, and all terms, specifications, and conditions are subject to change. Images serve only as a general representation of machines.